



# SPEC<sup>®</sup> CFP2006 Result

Copyright 2006-2014 Standard Performance Evaluation Corporation

## Huawei

SPECfp<sup>®</sup>2006 = **96.8**

Huawei BH622 v2 (Intel Xeon E5-2695 v2)

SPECfp\_base2006 = **92.4**

CPU2006 license: 3175

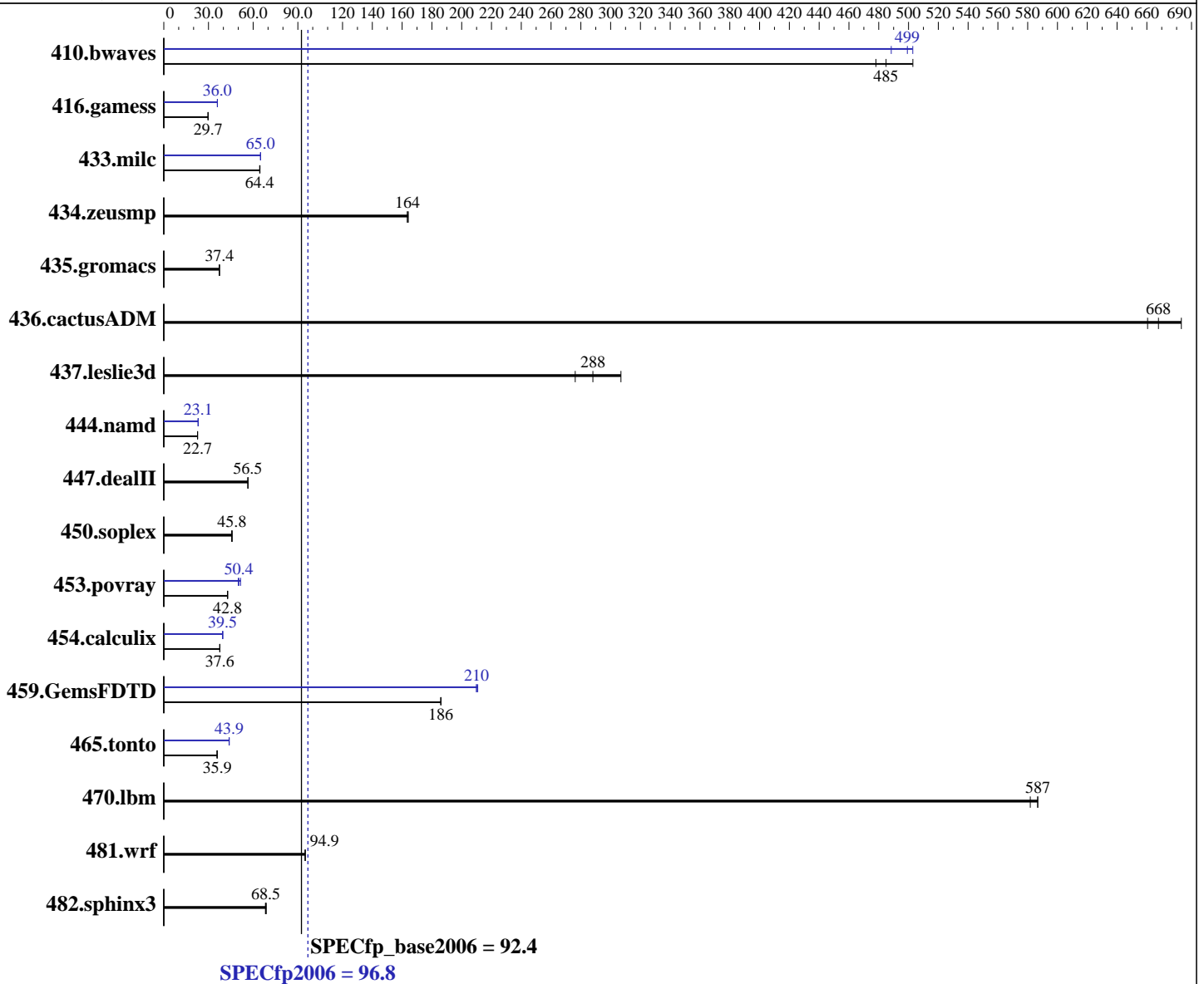
Test sponsor: Huawei

Tested by: Huawei

Test date: Sep-2014

Hardware Availability: Sep-2013

Software Availability: Nov-2013



### Hardware

CPU Name: Intel Xeon E5-2695 v2  
 CPU Characteristics: Intel Turbo Boost Technology up to 3.20 GHz  
 CPU MHz: 2400  
 FPU: Integrated  
 CPU(s) enabled: 24 cores, 2 chips, 12 cores/chip  
 CPU(s) orderable: 1,2 chip  
 Primary Cache: 32 KB I + 32 KB D on chip per core  
 Secondary Cache: 256 KB I+D on chip per core

Continued on next page

### Software

Operating System: Red Hat Enterprise Linux Server release 6.5 (Santiago)  
 2.6.32-431.el6.x86\_64  
 Compiler: C/C++: Version 12.1.0.225 of Intel C++ Studio XE for Linux;  
 Fortran: Version 12.1.0.225 of Intel Fortran Studio XE for Linux  
 Auto Parallel: Yes  
 File System: ext4

Continued on next page



# SPEC CFP2006 Result

Copyright 2006-2014 Standard Performance Evaluation Corporation

## Huawei

SPECfp2006 = **96.8**

## Huawei BH622 v2 (Intel Xeon E5-2695 v2)

SPECfp\_base2006 = **92.4**

CPU2006 license: 3175

Test sponsor: Huawei

Tested by: Huawei

Test date: Sep-2014

Hardware Availability: Sep-2013

Software Availability: Nov-2013

L3 Cache: 30 MB I+D on chip per chip  
 Other Cache: None  
 Memory: 256 GB (16 x 16 GB 2Rx4 PC3-14900R-13, ECC)  
 Disk Subsystem: 1 x 300 GB SAS, 10000 RPM  
 Other Hardware: None

System State: Run level 3 (multi-user)  
 Base Pointers: 64-bit  
 Peak Pointers: 32/64-bit  
 Other Software: None

## Results Table

Benchmark	Base						Peak					
	Seconds	Ratio	Seconds	Ratio	Seconds	Ratio	Seconds	Ratio	Seconds	Ratio	Seconds	Ratio
410.bwaves	28.4	478	<b>28.0</b>	<b>485</b>	27.0	503	<u>27.2</u>	<u>499</u>	27.0	503	27.8	488
416.gamess	659	29.7	659	29.7	<b>659</b>	<b>29.7</b>	544	36.0	544	36.0	<b>544</b>	<b>36.0</b>
433.milc	143	64.4	<b>143</b>	<b>64.4</b>	142	64.6	141	65.0	<b>141</b>	<b>65.0</b>	141	64.9
434.zeusmp	<b>55.6</b>	<b>164</b>	55.6	164	55.4	164	<b>55.6</b>	<b>164</b>	55.6	164	55.4	164
435.gromacs	191	37.3	<b>191</b>	<b>37.4</b>	191	37.4	191	37.3	<b>191</b>	<b>37.4</b>	191	37.4
436.cactusADM	<b>17.9</b>	<b>668</b>	17.5	683	18.1	661	<b>17.9</b>	<b>668</b>	17.5	683	18.1	661
437.leslie3d	<b>32.6</b>	<b>288</b>	34.0	276	30.6	307	<b>32.6</b>	<b>288</b>	34.0	276	30.6	307
444.namd	<b>354</b>	<b>22.7</b>	354	22.7	354	22.7	<b>348</b>	<b>23.1</b>	348	23.1	348	23.1
447.dealII	<b>203</b>	<b>56.5</b>	203	56.5	202	56.6	<b>203</b>	<b>56.5</b>	203	56.5	202	56.6
450.soplex	183	45.6	<b>182</b>	<b>45.8</b>	182	45.9	183	45.6	<b>182</b>	<b>45.8</b>	182	45.9
453.povray	124	42.8	<b>124</b>	<b>42.8</b>	124	42.9	106	50.0	103	51.6	<b>106</b>	<b>50.4</b>
454.calculix	219	37.7	<b>219</b>	<b>37.6</b>	220	37.6	209	39.5	209	39.5	<b>209</b>	<b>39.5</b>
459.GemsFDTD	57.0	186	<b>57.0</b>	<b>186</b>	57.0	186	50.3	211	<b>50.5</b>	<b>210</b>	50.5	210
465.tonto	276	35.7	274	35.9	<b>274</b>	<b>35.9</b>	<b>224</b>	<b>43.9</b>	224	43.9	224	43.8
470.lbm	23.4	587	<b>23.4</b>	<b>587</b>	23.6	582	23.4	587	<b>23.4</b>	<b>587</b>	23.6	582
481.wrf	<b>118</b>	<b>94.9</b>	118	94.9	118	94.9	<b>118</b>	<b>94.9</b>	118	94.9	118	94.9
482.sphinx3	283	68.8	<b>285</b>	<b>68.5</b>	286	68.2	283	68.8	<b>285</b>	<b>68.5</b>	286	68.2

Results appear in the order in which they were run. Bold underlined text indicates a median measurement.

## Operating System Notes

Stack size set to unlimited using "ulimit -s unlimited"

## Platform Notes

BIOS configuration:  
 Set Power Efficiency Mode to Custom  
 Baseboard Management Controller used to adjust the fan speed to 100%  
 Set Hyper-Threading to Disabled  
 Sysinfo program /spec/config/sysinfo.rev6800  
 \$Rev: 6800 \$ \$Date:: 2011-10-11 #\$ 6f2ebdff5032aaa42e583f96b07f99d3  
 running on localhost Sun Sep 21 05:10:22 2014

This section contains SUT (System Under Test) info as seen by some common utilities. To remove or add to this section, see:

Continued on next page



# SPEC CFP2006 Result

Copyright 2006-2014 Standard Performance Evaluation Corporation

Huawei

SPECfp2006 = 96.8

Huawei BH622 v2 (Intel Xeon E5-2695 v2)

SPECfp\_base2006 = 92.4

CPU2006 license: 3175

Test sponsor: Huawei

Tested by: Huawei

Test date: Sep-2014

Hardware Availability: Sep-2013

Software Availability: Nov-2013

## Platform Notes (Continued)

<http://www.spec.org/cpu2006/Docs/config.html#sysinfo>

From /proc/cpuinfo

```
model name : Intel(R) Xeon(R) CPU E5-2695 v2 @ 2.40GHz
 2 "physical id"s (chips)
 24 "processors"
```

cores, siblings (Caution: counting these is hw and system dependent. The following excerpts from /proc/cpuinfo might not be reliable. Use with caution.)

```
cpu cores : 12
siblings   : 12
physical 0: cores 0 1 2 3 4 5 8 9 10 11 12 13
physical 1: cores 0 1 2 3 4 5 8 9 10 11 12 13
cache size : 30720 KB
```

From /proc/meminfo

```
MemTotal:      264478184 kB
HugePages_Total: 0
Hugepagesize:   2048 kB
```

/usr/bin/lsb\_release -d

```
Red Hat Enterprise Linux Server release 6.5 (Santiago)
```

From /etc/\*release\* /etc/\*version\*

```
redhat-release: Red Hat Enterprise Linux Server release 6.5 (Santiago)
system-release: Red Hat Enterprise Linux Server release 6.5 (Santiago)
system-release-cpe: cpe:/o:redhat:enterprise_linux:6server:ga:server
```

uname -a:

```
Linux localhost 2.6.32-431.el6.x86_64 #1 SMP Sun Nov 10 22:19:54 EST 2013
x86_64 x86_64 x86_64 GNU/Linux
```

run-level 3 Sep 20 11:21

SPEC is set to: /spec

```
Filesystem      Type  Size  Used Avail Use% Mounted on
/dev/sda2        ext4  272G  33G  226G  13% /
```

Additional information from dmidecode:

Memory:

```
4x Hynix HMT42GR7AFR4C-RD 16 GB 1867 MHz 2 rank
12x Samsung M393B2G70DB0-CMA 16 GB 1867 MHz 2 rank
```

(End of data from sysinfo program)

## General Notes

Environment variables set by runspec before the start of the run:

```
KMP_AFFINITY = "granularity=fine,compact,0,1"
LD_LIBRARY_PATH = "/spec/libs/32:/spec/libs/64"
OMP_NUM_THREADS = "24"
```

Continued on next page



# SPEC CFP2006 Result

Copyright 2006-2014 Standard Performance Evaluation Corporation

Huawei

SPECfp2006 = 96.8

Huawei BH622 v2 (Intel Xeon E5-2695 v2)

SPECfp\_base2006 = 92.4

CPU2006 license: 3175

Test sponsor: Huawei

Tested by: Huawei

Test date: Sep-2014

Hardware Availability: Sep-2013

Software Availability: Nov-2013

## General Notes (Continued)

Binaries compiled on a system with 2 x Xeon X5645 CPU + 16GB memory using RHEL 6.1

Transparent Huge Pages enabled with:

echo always > /sys/kernel/mm/redhat\_transparent\_hugepage/enabled

## Base Compiler Invocation

C benchmarks:

icc -m64

C++ benchmarks:

icpc -m64

Fortran benchmarks:

ifort -m64

Benchmarks using both Fortran and C:

icc -m64 ifort -m64

## Base Portability Flags

410.bwaves: -DSPEC\_CPU\_LP64  
 416.gamess: -DSPEC\_CPU\_LP64  
 433.milc: -DSPEC\_CPU\_LP64  
 434.zeusmp: -DSPEC\_CPU\_LP64  
 435.gromacs: -DSPEC\_CPU\_LP64 -nofor\_main  
 436.cactusADM: -DSPEC\_CPU\_LP64 -nofor\_main  
 437.leslie3d: -DSPEC\_CPU\_LP64  
 444.namd: -DSPEC\_CPU\_LP64  
 447.deallI: -DSPEC\_CPU\_LP64  
 450.soplex: -DSPEC\_CPU\_LP64  
 453.povray: -DSPEC\_CPU\_LP64  
 454.calculix: -DSPEC\_CPU\_LP64 -nofor\_main  
 459.GemsFDTD: -DSPEC\_CPU\_LP64  
 465.tonto: -DSPEC\_CPU\_LP64  
 470.lbm: -DSPEC\_CPU\_LP64  
 481.wrf: -DSPEC\_CPU\_LP64 -DSPEC\_CPU\_CASE\_FLAG -DSPEC\_CPU\_LINUX  
 482.sphinx3: -DSPEC\_CPU\_LP64

## Base Optimization Flags

C benchmarks:

-xAVX -ipo -O3 -no-prec-div -static -parallel -opt-prefetch  
-ansi-alias

Continued on next page



# SPEC CFP2006 Result

Copyright 2006-2014 Standard Performance Evaluation Corporation

Huawei

SPECfp2006 = 96.8

Huawei BH622 v2 (Intel Xeon E5-2695 v2)

SPECfp\_base2006 = 92.4

CPU2006 license: 3175

Test date: Sep-2014

Test sponsor: Huawei

Hardware Availability: Sep-2013

Tested by: Huawei

Software Availability: Nov-2013

## Base Optimization Flags (Continued)

C++ benchmarks:

-xAVX -ipo -O3 -no-prec-div -static -opt-prefetch -ansi-alias

Fortran benchmarks:

-xAVX -ipo -O3 -no-prec-div -static -parallel -opt-prefetch

Benchmarks using both Fortran and C:

-xAVX -ipo -O3 -no-prec-div -static -parallel -opt-prefetch  
-ansi-alias

## Peak Compiler Invocation

C benchmarks:

icc -m64

C++ benchmarks:

icpc -m64

Fortran benchmarks:

ifort -m64

Benchmarks using both Fortran and C:

icc -m64 ifort -m64

## Peak Portability Flags

Same as Base Portability Flags

## Peak Optimization Flags

C benchmarks:

433.milc: -xAVX(pass 2) -prof-gen(pass 1) -ipo(pass 2) -O3(pass 2)  
-no-prec-div(pass 2) -prof-use(pass 2) -static -auto-ilp32  
-ansi-alias

470.lbm: basepeak = yes

482.sphinx3: basepeak = yes

C++ benchmarks:

444.namd: -xAVX(pass 2) -prof-gen(pass 1) -ipo(pass 2) -O3(pass 2)  
-no-prec-div(pass 2) -prof-use(pass 2) -fno-alias  
-auto-ilp32

Continued on next page



# SPEC CFP2006 Result

Copyright 2006-2014 Standard Performance Evaluation Corporation

Huawei

SPECfp2006 = 96.8

Huawei BH622 v2 (Intel Xeon E5-2695 v2)

SPECfp\_base2006 = 92.4

CPU2006 license: 3175

Test date: Sep-2014

Test sponsor: Huawei

Hardware Availability: Sep-2013

Tested by: Huawei

Software Availability: Nov-2013

## Peak Optimization Flags (Continued)

447.dealII: basepeak = yes

450.soplex: basepeak = yes

453.povray: -xAVX(pass 2) -prof-gen(pass 1) -ipo(pass 2) -O3(pass 2)  
-no-prec-div(pass 2) -prof-use(pass 2) -unroll4 -ansi-alias

### Fortran benchmarks:

410.bwaves: -xAVX -ipo -O3 -no-prec-div -opt-prefetch -parallel  
-static

416.gamess: -xAVX(pass 2) -prof-gen(pass 1) -ipo(pass 2) -O3(pass 2)  
-no-prec-div(pass 2) -prof-use(pass 2) -unroll2  
-inline-level=0 -scalar-rep- -static

434.zeusmp: basepeak = yes

437.leslie3d: basepeak = yes

459.GemsFDTD: -xAVX(pass 2) -prof-gen(pass 1) -ipo(pass 2) -O3(pass 2)  
-no-prec-div(pass 2) -prof-use(pass 2) -unroll2  
-inline-level=0 -opt-prefetch -parallel

465.tonto: -xAVX(pass 2) -prof-gen(pass 1) -ipo(pass 2) -O3(pass 2)  
-no-prec-div(pass 2) -prof-use(pass 2) -inline-calloc  
-opt-malloc-options=3 -auto -unroll4

### Benchmarks using both Fortran and C:

435.gromacs: basepeak = yes

436.cactusADM: basepeak = yes

454.calculix: -xAVX -ipo -O3 -no-prec-div -auto-ilp32 -ansi-alias

481.wrf: basepeak = yes

The flags files that were used to format this result can be browsed at

<http://www.spec.org/cpu2006/flags/Intel-ic12.1-official-linux64.20120425.html>

<http://www.spec.org/cpu2006/flags/Huawei-Platform-Settings-V1.0-IVB-RevG.html>

You can also download the XML flags sources by saving the following links:

<http://www.spec.org/cpu2006/flags/Intel-ic12.1-official-linux64.20120425.xml>

<http://www.spec.org/cpu2006/flags/Huawei-Platform-Settings-V1.0-IVB-RevG.xml>



# SPEC CFP2006 Result

Copyright 2006-2014 Standard Performance Evaluation Corporation

Huawei

SPECfp2006 = 96.8

Huawei BH622 v2 (Intel Xeon E5-2695 v2)

SPECfp\_base2006 = 92.4

CPU2006 license: 3175

Test sponsor: Huawei

Tested by: Huawei

Test date: Sep-2014

Hardware Availability: Sep-2013

Software Availability: Nov-2013

SPEC and SPECfp are registered trademarks of the Standard Performance Evaluation Corporation. All other brand and product names appearing in this result are trademarks or registered trademarks of their respective holders.

For questions about this result, please contact the tester.  
For other inquiries, please contact [webmaster@spec.org](mailto:webmaster@spec.org).

Tested with SPEC CPU2006 v1.2.  
Report generated on Thu Nov 6 13:47:02 2014 by SPEC CPU2006 PS/PDF formatter v6932.  
Originally published on 6 November 2014.