



SPEC® CINT2006 Result

Copyright 2006-2014 Standard Performance Evaluation Corporation

Hewlett-Packard Company

SPECint®2006 = 65.4

ProLiant DL360 Gen9
(2.60 GHz, Intel Xeon E5-2690 v3)

SPECint_base2006 = 62.7

CPU2006 license: 3

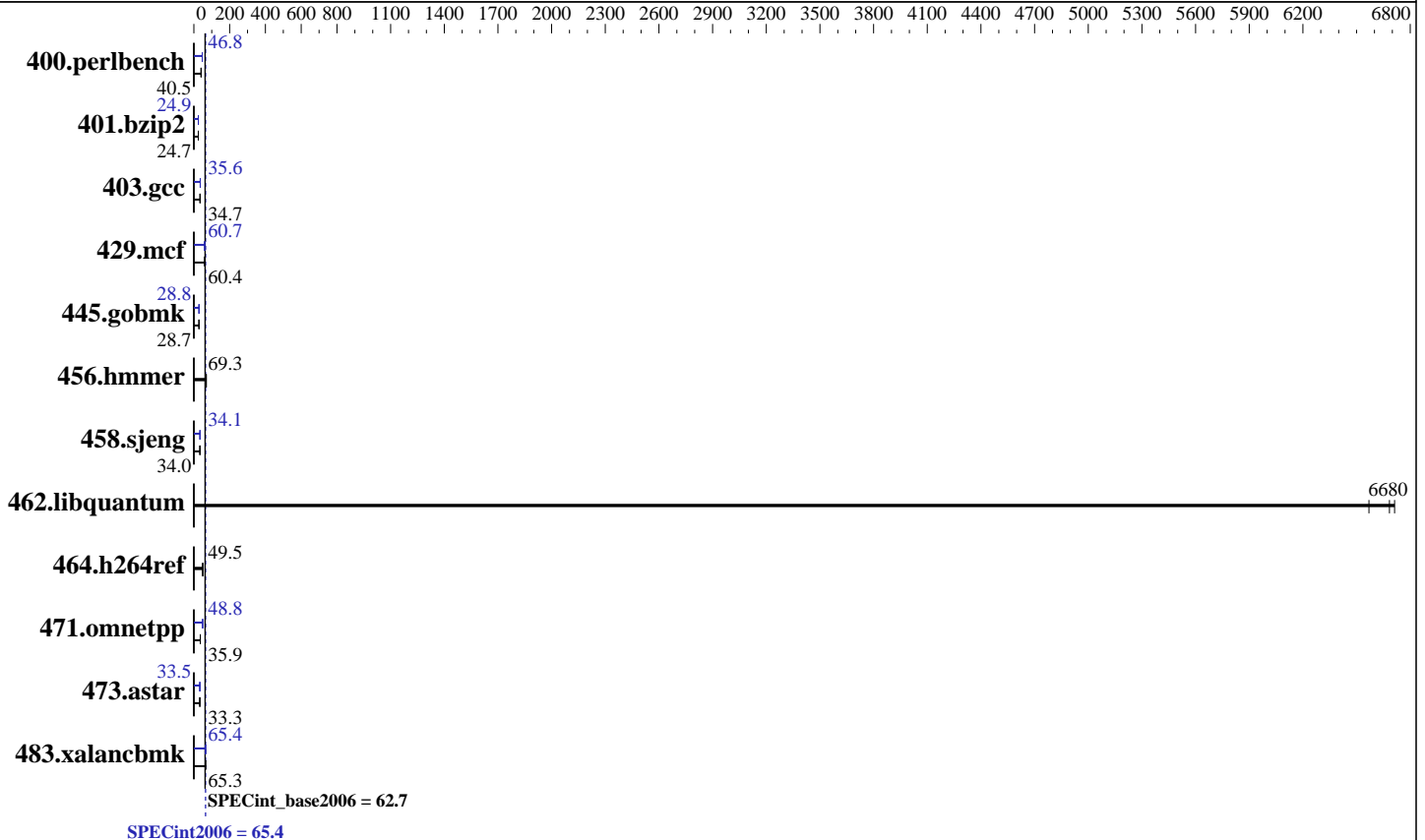
Test date: Nov-2014

Test sponsor: Hewlett-Packard Company

Hardware Availability: Sep-2014

Tested by: Hewlett-Packard Company

Software Availability: Sep-2014



Hardware

CPU Name: Intel Xeon E5-2690 v3
 CPU Characteristics: Intel Turbo Boost Technology up to 3.50 GHz
 CPU MHz: 2600
 FPU: Integrated
 CPU(s) enabled: 24 cores, 2 chips, 12 cores/chip
 CPU(s) orderable: 1,2 chip
 Primary Cache: 32 KB I + 32 KB D on chip per core
 Secondary Cache: 256 KB I+D on chip per core
 L3 Cache: 30 MB I+D on chip per chip
 Other Cache: None
 Memory: 256 GB (16 x 16 GB 2Rx4 PC4-2133P-R)
 Disk Subsystem: 1 x 400 GB SSD SAS, RAID 0
 Other Hardware: None

Software

Operating System: Red Hat Enterprise Linux Server release 7.0 (Maipo)
 Kernel 3.10.0-123.el7.x86_64
 Compiler: C/C++: Version 15.0.0.090 of Intel C++ Studio XE for Linux
 Auto Parallel: Yes
 File System: xfs
 System State: Run level 3 (multi-user)
 Base Pointers: 32/64-bit
 Peak Pointers: 32/64-bit
 Other Software: Microquill SmartHeap V10.0



SPEC CINT2006 Result

Copyright 2006-2014 Standard Performance Evaluation Corporation

Hewlett-Packard Company

ProLiant DL360 Gen9
(2.60 GHz, Intel Xeon E5-2690 v3)

SPECint2006 = **65.4**

SPECint_base2006 = **62.7**

CPU2006 license: 3
Test sponsor: Hewlett-Packard Company
Tested by: Hewlett-Packard Company

Test date: Nov-2014
Hardware Availability: Sep-2014
Software Availability: Sep-2014

Results Table

Benchmark	Base						Peak					
	Seconds	Ratio	Seconds	Ratio	Seconds	Ratio	Seconds	Ratio	Seconds	Ratio	Seconds	Ratio
400.perlbench	242	40.4	241	40.5	241	40.5	209	46.8	209	46.8	209	46.7
401.bzip2	390	24.7	391	24.7	389	24.8	387	25.0	387	24.9	387	24.9
403.gcc	232	34.7	232	34.7	233	34.6	226	35.6	226	35.7	226	35.6
429.mcf	152	60.1	151	60.6	151	60.4	150	60.7	151	60.5	150	60.7
445.gobmk	367	28.6	364	28.8	366	28.7	364	28.8	365	28.8	364	28.8
456.hammer	135	69.3	135	69.2	135	69.3	135	69.3	135	69.2	135	69.3
458.sjeng	356	34.0	356	34.0	356	34.0	355	34.1	355	34.1	355	34.1
462.libquantum	3.15	6570	3.10	6680	3.09	6710	3.15	6570	3.10	6680	3.09	6710
464.h264ref	447	49.6	447	49.5	449	49.3	447	49.6	447	49.5	449	49.3
471.omnetpp	174	35.9	175	35.8	173	36.1	128	48.8	128	48.9	128	48.8
473.astar	211	33.3	211	33.3	211	33.3	212	33.2	209	33.5	209	33.6
483.xalancbmk	106	65.1	105	65.6	106	65.3	106	65.4	104	66.0	106	65.2

Results appear in the order in which they were run. Bold underlined text indicates a median measurement.

Submit Notes

The config file option 'submit' was used.

Operating System Notes

Stack size set to unlimited using "ulimit -s unlimited"
Transparent Huge Pages enabled with:
echo always > /sys/kernel/mm/transparent_hugepage/enabled

Platform Notes

BIOS Configuration:
HP Power Profile set to Custom
HP Power Regulator to HP Static High Performance Mode
Minimum Processor Idle Power Core State set to C6 State
Minimum Processor Idle Power Package State set to No Package State
QPI Snoop Configuration set to Early Snoop
Thermal Configuration set to Maximum Cooling
Collaborative Power Control set to Disabled
Processor Power and Utilization Monitoring set to Disabled
Energy/Performance Bias set to Maximum Performance
Memory Refresh Rate set to 1x Refresh
Intel Hyperthreading Options set to Disabled

Sysinfo program /home/cpu2006/config/sysinfo.rev6914
\$Rev: 6914 \$ \$Date:: 2014-06-25 #\$ e3fbb8667b5a285932ceab81e28219e1
running on Pilot-DL360-G9 Wed Nov 5 09:23:18 2014

Continued on next page



SPEC CINT2006 Result

Copyright 2006-2014 Standard Performance Evaluation Corporation

Hewlett-Packard Company

SPECint2006 = 65.4

ProLiant DL360 Gen9
(2.60 GHz, Intel Xeon E5-2690 v3)

SPECint_base2006 = 62.7

CPU2006 license: 3

Test date: Nov-2014

Test sponsor: Hewlett-Packard Company

Hardware Availability: Sep-2014

Tested by: Hewlett-Packard Company

Software Availability: Sep-2014

Platform Notes (Continued)

This section contains SUT (System Under Test) info as seen by some common utilities. To remove or add to this section, see: <http://www.spec.org/cpu2006/Docs/config.html#sysinfo>

```

From /proc/cpuinfo
model name      : Intel(R) Xeon(R) CPU E5-2690 v3 @ 2.60GHz
 2 "physical id"s (chips)
 24 "processors"
cores, siblings (Caution: counting these is hw and system dependent. The
following excerpts from /proc/cpuinfo might not be reliable. Use with
caution.)
  cpu cores    : 12
  siblings     : 12
  physical 0:  cores 0 1 2 3 4 5 8 9 10 11 12 13
  physical 1:  cores 0 1 2 3 4 5 8 9 10 11 12 13
cache size     : 30720 KB

```

```

From /proc/meminfo
MemTotal:      263845892 kB
HugePages_Total: 0
Hugepagesize:  2048 kB

```

```

From /etc/*release* /etc/*version*
os-release:
NAME="Red Hat Enterprise Linux Server"
VERSION="7.0 (Maipo)"
ID="rhel"
ID_LIKE="fedora"
VERSION_ID="7.0"
PRETTY_NAME="Red Hat Enterprise Linux Server 7.0 (Maipo)"
ANSI_COLOR="0;31"
CPE_NAME="cpe:/o:redhat:enterprise_linux:7.0:GA:server"
redhat-release: Red Hat Enterprise Linux Server release 7.0 (Maipo)
system-release: Red Hat Enterprise Linux Server release 7.0 (Maipo)
system-release-cpe: cpe:/o:redhat:enterprise_linux:7.0:ga:server

```

```

uname -a:
Linux Pilot-DL360-G9 3.10.0-123.el7.x86_64 #1 SMP Mon May 5 11:16:57 EDT 2014
x86_64 x86_64 x86_64 GNU/Linux

```

run-level 3 Nov 5 09:21

SPEC is set to: /home/cpu2006

Filesystem	Type	Size	Used	Avail	Use%	Mounted on
/dev/mapper/rhel_pilot--dl360--g9-home	xfs	318G	109G	210G	35%	/home

Additional information from dmidecode:

Warning: Use caution when you interpret this section. The 'dmidecode' program reads system data which is "intended to allow hardware to be accurately determined", but the intent may not be met, as there are frequent changes to hardware, firmware, and the "DMTF SMBIOS" standard.

Continued on next page



SPEC CINT2006 Result

Copyright 2006-2014 Standard Performance Evaluation Corporation

Hewlett-Packard Company

SPECint2006 = 65.4

ProLiant DL360 Gen9
(2.60 GHz, Intel Xeon E5-2690 v3)

SPECint_base2006 = 62.7

CPU2006 license: 3

Test date: Nov-2014

Test sponsor: Hewlett-Packard Company

Hardware Availability: Sep-2014

Tested by: Hewlett-Packard Company

Software Availability: Sep-2014

Platform Notes (Continued)

BIOS HP P89 07/11/2014

Memory:

16x HP NOT AVAILABLE 16 GB 2 rank 2133 MHz

8x UNKNOWN NOT AVAILABLE

(End of data from sysinfo program)

Regarding the sysinfo display about the memory installed, the correct amount of memory is 256 GB and the dmidecode description should have one line reading as:
16x HP NOT AVAILABLE 16 GB 2 rank 2133 MHz

General Notes

Environment variables set by runspec before the start of the run:

KMP_AFFINITY = "granularity=fine,scatter"

LD_LIBRARY_PATH = "/home/cpu2006/libs/32:/home/cpu2006/libs/64:/home/cpu2006/sh"

OMP_NUM_THREADS = "24"

Binaries compiled on a system with 1x Core i5-4670K CPU + 16GB memory using RedHat EL 7.0

Base Compiler Invocation

C benchmarks:

icc -m64

C++ benchmarks:

icpc -m64

Base Portability Flags

400.perlbench: -DSPEC_CPU_LP64 -DSPEC_CPU_LINUX_X64
401.bzip2: -DSPEC_CPU_LP64
403.gcc: -DSPEC_CPU_LP64
429.mcf: -DSPEC_CPU_LP64
445.gobmk: -DSPEC_CPU_LP64
456.hmmer: -DSPEC_CPU_LP64
458.sjeng: -DSPEC_CPU_LP64
462.libquantum: -DSPEC_CPU_LP64 -DSPEC_CPU_LINUX
464.h264ref: -DSPEC_CPU_LP64
471.omnetpp: -DSPEC_CPU_LP64
473.astar: -DSPEC_CPU_LP64
483.xalanbmk: -DSPEC_CPU_LP64 -DSPEC_CPU_LINUX



SPEC CINT2006 Result

Copyright 2006-2014 Standard Performance Evaluation Corporation

Hewlett-Packard Company

SPECint2006 = 65.4

ProLiant DL360 Gen9
(2.60 GHz, Intel Xeon E5-2690 v3)

SPECint_base2006 = 62.7

CPU2006 license: 3

Test date: Nov-2014

Test sponsor: Hewlett-Packard Company

Hardware Availability: Sep-2014

Tested by: Hewlett-Packard Company

Software Availability: Sep-2014

Base Optimization Flags

C benchmarks:

`-xCORE-AVX2 -ipo -O3 -no-prec-div -parallel -opt-prefetch -auto-p32`

C++ benchmarks:

`-xCORE-AVX2 -ipo -O3 -no-prec-div -opt-prefetch -auto-p32
-Wl,-z,muldefs -L/sh -lsmarheap64`

Base Other Flags

C benchmarks:

`403.gcc: -Dalloca=_alloca`

Peak Compiler Invocation

C benchmarks (except as noted below):

`icc -m64`

`400.perlbench: icc -m32 -L/opt/intel/composer_xe_2015/lib/ia32`

`445.gobmk: icc -m32 -L/opt/intel/composer_xe_2015/lib/ia32`

C++ benchmarks (except as noted below):

`icpc -m32 -L/opt/intel/composer_xe_2015/lib/ia32`

`473.astar: icpc -m64`

Peak Portability Flags

`400.perlbench: -DSPEC_CPU_LINUX_IA32`

`401.bzip2: -DSPEC_CPU_LP64`

`403.gcc: -DSPEC_CPU_LP64`

`429.mcf: -DSPEC_CPU_LP64`

`456.hmmer: -DSPEC_CPU_LP64`

`458.sjeng: -DSPEC_CPU_LP64`

`462.libquantum: -DSPEC_CPU_LP64 -DSPEC_CPU_LINUX`

`464.h264ref: -DSPEC_CPU_LP64`

`473.astar: -DSPEC_CPU_LP64`

`483.xalancbmk: -DSPEC_CPU_LINUX`



SPEC CINT2006 Result

Copyright 2006-2014 Standard Performance Evaluation Corporation

Hewlett-Packard Company

SPECint2006 = 65.4

ProLiant DL360 Gen9
(2.60 GHz, Intel Xeon E5-2690 v3)

SPECint_base2006 = 62.7

CPU2006 license: 3

Test date: Nov-2014

Test sponsor: Hewlett-Packard Company

Hardware Availability: Sep-2014

Tested by: Hewlett-Packard Company

Software Availability: Sep-2014

Peak Optimization Flags

C benchmarks:

400.perlbench: -xCORE-AVX2(pass 2) -prof-gen(pass 1) -ipo(pass 2)
-O3(pass 2) -no-prec-div(pass 2) -prof-use(pass 2)
-opt-prefetch -ansi-alias

401.bzip2: -xCORE-AVX2(pass 2) -prof-gen(pass 1) -ipo(pass 2)
-O3(pass 2) -no-prec-div -prof-use(pass 2) -auto-ilp32
-opt-prefetch -ansi-alias

403.gcc: -xCORE-AVX2 -ipo -O3 -no-prec-div -inline-calloc
-opt-malloc-options=3 -auto-ilp32

429.mcf: -xCORE-AVX2 -ipo -O3 -no-prec-div -parallel
-opt-prefetch -auto-p32

445.gobmk: -xCORE-AVX2(pass 2) -prof-gen(pass 1) -prof-use(pass 2)
-ansi-alias

456.hmmmer: basepeak = yes

458.sjeng: -xCORE-AVX2(pass 2) -prof-gen(pass 1) -ipo(pass 2)
-O3(pass 2) -no-prec-div(pass 2) -prof-use(pass 2)
-unroll14

462.libquantum: basepeak = yes

464.h264ref: basepeak = yes

C++ benchmarks:

471.omnetpp: -xCORE-AVX2(pass 2) -prof-gen(pass 1) -ipo(pass 2)
-O3(pass 2) -no-prec-div(pass 2) -prof-use(pass 2)
-opt-ra-region-strategy=block -ansi-alias
-Wl,-z,muldefs -L/sh -lsmartheap

473.astar: -xCORE-AVX2 -ipo -O3 -no-prec-div -opt-prefetch
-auto-p32 -Wl,-z,muldefs -L/sh -lsmartheap64

483.xalancbmk: -xCORE-AVX2 -ipo -O3 -no-prec-div -opt-prefetch
-ansi-alias -Wl,-z,muldefs -L/sh -lsmartheap

Peak Other Flags

C benchmarks:

403.gcc: -Dalloca=_alloca



SPEC CINT2006 Result

Copyright 2006-2014 Standard Performance Evaluation Corporation

Hewlett-Packard Company

ProLiant DL360 Gen9
(2.60 GHz, Intel Xeon E5-2690 v3)

SPECint2006 = 65.4

SPECint_base2006 = 62.7

CPU2006 license: 3

Test sponsor: Hewlett-Packard Company

Tested by: Hewlett-Packard Company

Test date: Nov-2014

Hardware Availability: Sep-2014

Software Availability: Sep-2014

The flags files that were used to format this result can be browsed at

<http://www.spec.org/cpu2006/flags/Intel-ic15.0-official-linux64.html>

<http://www.spec.org/cpu2006/flags/HP-Platform-Flags-Intel-V1.2-HSW-revE.html>

You can also download the XML flags sources by saving the following links:

<http://www.spec.org/cpu2006/flags/Intel-ic15.0-official-linux64.xml>

<http://www.spec.org/cpu2006/flags/HP-Platform-Flags-Intel-V1.2-HSW-revE.xml>

SPEC and SPECint are registered trademarks of the Standard Performance Evaluation Corporation. All other brand and product names appearing in this result are trademarks or registered trademarks of their respective holders.

For questions about this result, please contact the tester.
For other inquiries, please contact webmaster@spec.org.

Tested with SPEC CPU2006 v1.2.
Report generated on Wed Dec 3 10:35:59 2014 by SPEC CPU2006 PS/PDF formatter v6932.
Originally published on 2 December 2014.