



SPEC[®] CFP2006 Result

Copyright 2006-2014 Standard Performance Evaluation Corporation

Huawei

SPECfp[®]2006 = **110**

Huawei CH121 (Intel Xeon E5-2667 v2)

SPECfp_base2006 = **105**

CPU2006 license: 3175

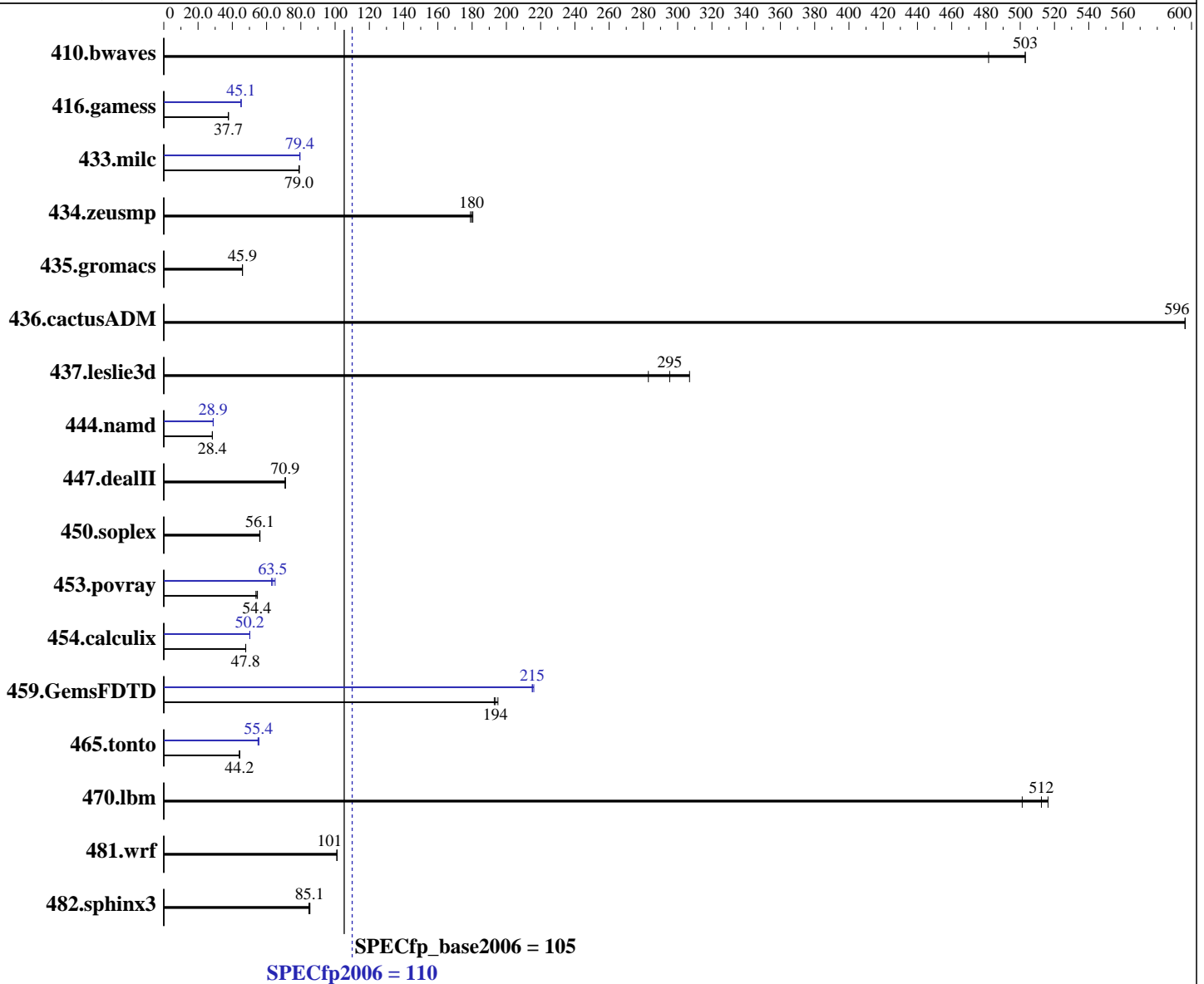
Test sponsor: Huawei

Tested by: Huawei

Test date: Sep-2014

Hardware Availability: Sep-2013

Software Availability: Nov-2013



Hardware

CPU Name: Intel Xeon E5-2667 v2
 CPU Characteristics: Intel Turbo Boost Technology up to 4.00 GHz
 CPU MHz: 3300
 FPU: Integrated
 CPU(s) enabled: 16 cores, 2 chips, 8 cores/chip
 CPU(s) orderable: 1,2 chip
 Primary Cache: 32 KB I + 32 KB D on chip per core
 Secondary Cache: 256 KB I+D on chip per core

Continued on next page

Software

Operating System: Red Hat Enterprise Linux Server release 6.5 (Santiago)
 2.6.32-431.el6.x86_64
 Compiler: C/C++: Version 12.1.0.225 of Intel C++ Studio XE for Linux;
 Fortran: Version 12.1.0.225 of Intel Fortran Studio XE for Linux
 Auto Parallel: Yes
 File System: ext4

Continued on next page



SPEC CFP2006 Result

Copyright 2006-2014 Standard Performance Evaluation Corporation

Huawei

SPECfp2006 = **110**

Huawei CH121 (Intel Xeon E5-2667 v2)

SPECfp_base2006 = **105**

CPU2006 license: 3175

Test sponsor: Huawei

Tested by: Huawei

Test date: Sep-2014

Hardware Availability: Sep-2013

Software Availability: Nov-2013

L3 Cache: 25 MB I+D on chip per chip
 Other Cache: None
 Memory: 256 GB (16 x 16 GB 2Rx4 PC3-14900R-13, ECC)
 Disk Subsystem: 1 x 300 GB SATA, 7200RPM
 Other Hardware: None

System State: Run level 3 (multi-user)
 Base Pointers: 64-bit
 Peak Pointers: 32/64-bit
 Other Software: None

Results Table

Benchmark	Base						Peak					
	Seconds	Ratio	Seconds	Ratio	Seconds	Ratio	Seconds	Ratio	Seconds	Ratio	Seconds	Ratio
410.bwaves	27.0	503	28.2	482	<u>27.0</u>	<u>503</u>	27.0	503	28.2	482	<u>27.0</u>	<u>503</u>
416.gamess	519	37.7	519	37.7	<u>519</u>	<u>37.7</u>	434	45.2	<u>434</u>	<u>45.1</u>	434	45.1
433.milc	116	79.1	116	79.0	<u>116</u>	<u>79.0</u>	<u>116</u>	<u>79.4</u>	115	79.5	116	79.4
434.zeusmp	50.4	180	<u>50.6</u>	<u>180</u>	50.8	179	50.4	180	<u>50.6</u>	<u>180</u>	50.8	179
435.gromacs	156	45.9	156	45.9	<u>156</u>	<u>45.9</u>	156	45.9	156	45.9	<u>156</u>	<u>45.9</u>
436.cactusADM	<u>20.0</u>	<u>596</u>	20.0	596	20.0	596	<u>20.0</u>	<u>596</u>	20.0	596	20.0	596
437.leslie3d	<u>31.8</u>	<u>295</u>	33.2	283	30.6	307	<u>31.8</u>	<u>295</u>	33.2	283	30.6	307
444.namd	<u>283</u>	<u>28.4</u>	283	28.4	283	28.4	278	28.8	278	28.9	<u>278</u>	<u>28.9</u>
447.dealII	161	71.0	<u>161</u>	<u>70.9</u>	161	70.9	161	71.0	<u>161</u>	<u>70.9</u>	161	70.9
450.soplex	149	56.0	<u>149</u>	<u>56.1</u>	149	56.2	149	56.0	<u>149</u>	<u>56.1</u>	149	56.2
453.povray	98.9	53.8	<u>97.8</u>	<u>54.4</u>	97.3	54.7	84.5	62.9	81.9	65.0	<u>83.7</u>	<u>63.5</u>
454.calculix	172	47.9	173	47.8	<u>173</u>	<u>47.8</u>	<u>164</u>	<u>50.2</u>	164	50.2	164	50.2
459.GemsFDTD	<u>54.8</u>	<u>194</u>	54.4	195	55.0	193	49.1	216	<u>49.3</u>	<u>215</u>	49.3	215
465.tonto	223	44.1	222	44.3	<u>223</u>	<u>44.2</u>	177	55.5	<u>178</u>	<u>55.4</u>	179	55.0
470.lbm	<u>26.8</u>	<u>512</u>	27.4	501	26.6	516	<u>26.8</u>	<u>512</u>	27.4	501	26.6	516
481.wrf	111	101	110	101	<u>110</u>	<u>101</u>	111	101	110	101	<u>110</u>	<u>101</u>
482.sphinx3	228	85.3	<u>229</u>	<u>85.1</u>	230	84.7	228	85.3	<u>229</u>	<u>85.1</u>	230	84.7

Results appear in the order in which they were run. Bold underlined text indicates a median measurement.

Operating System Notes

Stack size set to unlimited using "ulimit -s unlimited"

Platform Notes

BIOS configuration:
 Set Hyper-Threading to Disabled
 Sysinfo program /spec/config/sysinfo.rev6800
 \$Rev: 6800 \$ \$Date:: 2011-10-11 #\$ 6f2ebdff5032aaa42e583f96b07f99d3
 running on localhost.localdomain Thu Sep 18 17:15:17 2014

This section contains SUT (System Under Test) info as seen by some common utilities. To remove or add to this section, see:
<http://www.spec.org/cpu2006/Docs/config.html#sysinfo>

Continued on next page



SPEC CFP2006 Result

Copyright 2006-2014 Standard Performance Evaluation Corporation

Huawei

SPECfp2006 = 110

Huawei CH121 (Intel Xeon E5-2667 v2)

SPECfp_base2006 = 105

CPU2006 license: 3175

Test sponsor: Huawei

Tested by: Huawei

Test date: Sep-2014

Hardware Availability: Sep-2013

Software Availability: Nov-2013

Platform Notes (Continued)

```

From /proc/cpuinfo
model name : Intel(R) Xeon(R) CPU E5-2667 v2 @ 3.30GHz
 2 "physical id"s (chips)
 16 "processors"
cores, siblings (Caution: counting these is hw and system dependent. The
following excerpts from /proc/cpuinfo might not be reliable. Use with
caution.)
  cpu cores : 8
  siblings  : 8
  physical 0: cores 1 2 3 4 8 9 10 11
  physical 1: cores 1 2 3 4 8 9 10 11
cache size : 25600 KB

From /proc/meminfo
MemTotal:      264478184 kB
HugePages_Total:      0
Hugepagesize:    2048 kB

/usr/bin/lsb_release -d
Red Hat Enterprise Linux Server release 6.5 (Santiago)

From /etc/*release* /etc/*version*
redhat-release: Red Hat Enterprise Linux Server release 6.5 (Santiago)
system-release: Red Hat Enterprise Linux Server release 6.5 (Santiago)
system-release-cpe: cpe:/o:redhat:enterprise_linux:6server:ga:server

uname -a:
Linux localhost.localdomain 2.6.32-431.el6.x86_64 #1 SMP Sun Nov 10 22:19:54
EST 2013 x86_64 x86_64 x86_64 GNU/Linux

run-level 3 Sep 18 17:13

SPEC is set to: /spec
Filesystem      Type  Size  Used Avail Use% Mounted on
/dev/sda2       ext4  265G  14G  238G   6% /

Additional information from dmidecode:
Memory:
 16x Micron 36JSF2G72PZ-1G9E1 16 GB 1867 MHz 2 rank

(End of data from sysinfo program)

```

General Notes

Environment variables set by runspec before the start of the run:

```

KMP_AFFINITY = "granularity=fine,compact,0,1"
LD_LIBRARY_PATH = "/spec/libs/32:/spec/libs/64"
OMP_NUM_THREADS = "16"

```

Binaries compiled on a system with 2 x Xeon X5645 CPU + 16GB memory using RHEL 6.1

Continued on next page



SPEC CFP2006 Result

Copyright 2006-2014 Standard Performance Evaluation Corporation

Huawei

SPECfp2006 = 110

Huawei CH121 (Intel Xeon E5-2667 v2)

SPECfp_base2006 = 105

CPU2006 license: 3175
Test sponsor: Huawei
Tested by: Huawei

Test date: Sep-2014
Hardware Availability: Sep-2013
Software Availability: Nov-2013

General Notes (Continued)

Transparent Huge Pages enabled with:
echo always > /sys/kernel/mm/redhat_transparent_hugepage/enabled

Base Compiler Invocation

C benchmarks:
icc -m64

C++ benchmarks:
icpc -m64

Fortran benchmarks:
ifort -m64

Benchmarks using both Fortran and C:
icc -m64 ifort -m64

Base Portability Flags

410.bwaves: -DSPEC_CPU_LP64
416.gamess: -DSPEC_CPU_LP64
433.milc: -DSPEC_CPU_LP64
434.zeusmp: -DSPEC_CPU_LP64
435.gromacs: -DSPEC_CPU_LP64 -nofor_main
436.cactusADM: -DSPEC_CPU_LP64 -nofor_main
437.leslie3d: -DSPEC_CPU_LP64
444.namd: -DSPEC_CPU_LP64
447.dealII: -DSPEC_CPU_LP64
450.soplex: -DSPEC_CPU_LP64
453.povray: -DSPEC_CPU_LP64
454.calculix: -DSPEC_CPU_LP64 -nofor_main
459.GemsFDTD: -DSPEC_CPU_LP64
465.tonto: -DSPEC_CPU_LP64
470.lbm: -DSPEC_CPU_LP64
481.wrf: -DSPEC_CPU_LP64 -DSPEC_CPU_CASE_FLAG -DSPEC_CPU_LINUX
482.sphinx3: -DSPEC_CPU_LP64

Base Optimization Flags

C benchmarks:
-xAVX -ipo -O3 -no-prec-div -static -parallel -opt-prefetch
-ansi-alias

C++ benchmarks:
-xAVX -ipo -O3 -no-prec-div -static -opt-prefetch -ansi-alias

Continued on next page



SPEC CFP2006 Result

Copyright 2006-2014 Standard Performance Evaluation Corporation

Huawei

SPECfp2006 = 110

Huawei CH121 (Intel Xeon E5-2667 v2)

SPECfp_base2006 = 105

CPU2006 license: 3175

Test sponsor: Huawei

Tested by: Huawei

Test date: Sep-2014

Hardware Availability: Sep-2013

Software Availability: Nov-2013

Base Optimization Flags (Continued)

Fortran benchmarks:

`-xAVX -ipo -O3 -no-prec-div -static -parallel -opt-prefetch`

Benchmarks using both Fortran and C:

`-xAVX -ipo -O3 -no-prec-div -static -parallel -opt-prefetch
-ansi-alias`

Peak Compiler Invocation

C benchmarks:

`icc -m64`

C++ benchmarks:

`icpc -m64`

Fortran benchmarks:

`ifort -m64`

Benchmarks using both Fortran and C:

`icc -m64 ifort -m64`

Peak Portability Flags

Same as Base Portability Flags

Peak Optimization Flags

C benchmarks:

433.milc: `-xAVX(pass 2) -prof-gen(pass 1) -ipo(pass 2) -O3(pass 2)
-no-prec-div(pass 2) -prof-use(pass 2) -static -auto-ilp32
-ansi-alias`

470.lbm: `basepeak = yes`

482.sphinx3: `basepeak = yes`

C++ benchmarks:

444.namd: `-xAVX(pass 2) -prof-gen(pass 1) -ipo(pass 2) -O3(pass 2)
-no-prec-div(pass 2) -prof-use(pass 2) -fno-alias
-auto-ilp32`

Continued on next page



SPEC CFP2006 Result

Copyright 2006-2014 Standard Performance Evaluation Corporation

Huawei

SPECfp2006 = 110

Huawei CH121 (Intel Xeon E5-2667 v2)

SPECfp_base2006 = 105

CPU2006 license: 3175

Test sponsor: Huawei

Tested by: Huawei

Test date: Sep-2014

Hardware Availability: Sep-2013

Software Availability: Nov-2013

Peak Optimization Flags (Continued)

447.deallI: basepeak = yes

450.soplex: basepeak = yes

453.povray: -xAVX(pass 2) -prof-gen(pass 1) -ipo(pass 2) -O3(pass 2)
-no-prec-div(pass 2) -prof-use(pass 2) -unroll4 -ansi-alias

Fortran benchmarks:

410.bwaves: basepeak = yes

416.gamess: -xAVX(pass 2) -prof-gen(pass 1) -ipo(pass 2) -O3(pass 2)
-no-prec-div(pass 2) -prof-use(pass 2) -unroll2
-inline-level=0 -scalar-rep- -static

434.zeusmp: basepeak = yes

437.leslie3d: basepeak = yes

459.GemsFDTD: -xAVX(pass 2) -prof-gen(pass 1) -ipo(pass 2) -O3(pass 2)
-no-prec-div(pass 2) -prof-use(pass 2) -unroll2
-inline-level=0 -opt-prefetch -parallel

465.tonto: -xAVX(pass 2) -prof-gen(pass 1) -ipo(pass 2) -O3(pass 2)
-no-prec-div(pass 2) -prof-use(pass 2) -inline-calloc
-opt-malloc-options=3 -auto -unroll4

Benchmarks using both Fortran and C:

435.gromacs: basepeak = yes

436.cactusADM: basepeak = yes

454.calculix: -xAVX -ipo -O3 -no-prec-div -auto-ilp32 -ansi-alias

481.wrf: basepeak = yes

The flags files that were used to format this result can be browsed at

<http://www.spec.org/cpu2006/flags/Intel-ic12.1-official-linux64.20111122.html>

<http://www.spec.org/cpu2006/flags/Huawei-Platform-Settings-V1.0-IVB-RevG.html>

You can also download the XML flags sources by saving the following links:

<http://www.spec.org/cpu2006/flags/Intel-ic12.1-official-linux64.20111122.xml>

<http://www.spec.org/cpu2006/flags/Huawei-Platform-Settings-V1.0-IVB-RevG.xml>



SPEC CFP2006 Result

Copyright 2006-2014 Standard Performance Evaluation Corporation

Huawei	SPECfp2006 = 110
Huawei CH121 (Intel Xeon E5-2667 v2)	SPECfp_base2006 = 105

CPU2006 license: 3175
Test sponsor: Huawei
Tested by: Huawei

Test date: Sep-2014
Hardware Availability: Sep-2013
Software Availability: Nov-2013

SPEC and SPECfp are registered trademarks of the Standard Performance Evaluation Corporation. All other brand and product names appearing in this result are trademarks or registered trademarks of their respective holders.

For questions about this result, please contact the tester.
 For other inquiries, please contact webmaster@spec.org.

Tested with SPEC CPU2006 v1.2.
 Report generated on Fri Oct 17 18:23:11 2014 by SPEC CPU2006 PS/PDF formatter v6932.
 Originally published on 17 October 2014.